

# *Satellite Suites*<sup>™</sup>

28 Foot 8 Station Shower Trailer

## OWNER'S MANUAL



*Satellite Suites*<sup>™</sup>

*Satellite Suites*<sup>™</sup>

1686 Commerce Drive, Bristol, Indiana 46507

[www.satelliteindustries.com](http://www.satelliteindustries.com)

*April 2017*

# Table of Contents

28 Foot 8 Station Shower Trailer.....	4
OWNER'S MANUAL .....	4
WELCOME .....	5
OWNER'S INFORMATION .....	7
TRANSPORTING YOUR UNIT .....	8
Towing.....	8
Transporting Your Restroom Trailer.....	9
BEFORE EVENT SET UP CHECKLIST.....	10
AFTER THE EVENT - TEAR DOWN .....	11
INITIAL SET UP.....	12
Securing the Unit.....	12
Sidewinder Leveling Jack Installation .....	13
Steps and Door Handles Installation.....	14
Deploying Steps and Door Handles. ....	14
ELECTRICAL CONNECTIONS.....	16
Power Cords, Outlets and Utility Area. ....	16
Power Cords. ....	16
Electrical Inlets.....	17
Service Area.....	17
12 Volt Panel Converter .....	19
Fuse Panel .....	19
Optional Entertainment Center.....	20
Electrical Switches .....	20
Battery Disconnect.....	21
Group 24 - 12 Volt Deep Cycle Battery .....	21
PLUMBING .....	22
Water Connections. ....	22
Pressure Gauge .....	22
Water Filter.....	23
MAIN WATER SUPPLY OPTIONS .....	23
City Water Supply.....	24

Water Heater.....	26
Turning on the Air Conditioning in the Unit. ....	27
WASTE TANK.....	29
Clean Out Port for Waste Tank.....	29
Blade Style Valve Dump Valve with a 2" Quick Connect Cam. ....	29
AC/Heat Strip .....	30
Forced Air Heat (Optional Accessory) .....	31
Waste Tank Heater .....	31
Waste Tank Heater Circuit Breakers.....	32
WINTER OPERATION - ARCTIC PACKAGE.....	32
Tips When Operating in Inclement Weather.....	33
Dump Valve.....	33
Water Supply.....	33
Skirting the Trailer .....	33
Monitoring your System.....	33
REPAIRING FAUCETS AND ADJUSTING WATER FLOW .....	34
TROUBLESHOOTING .....	35
CONTRACTING CUSTOMER SERVICE .....	36
WINTERIZING .....	37
GENERAL RESTROOM TRAILER MAINTENANCE TIPS .....	39
WARRANTY .....	40

# WELCOME

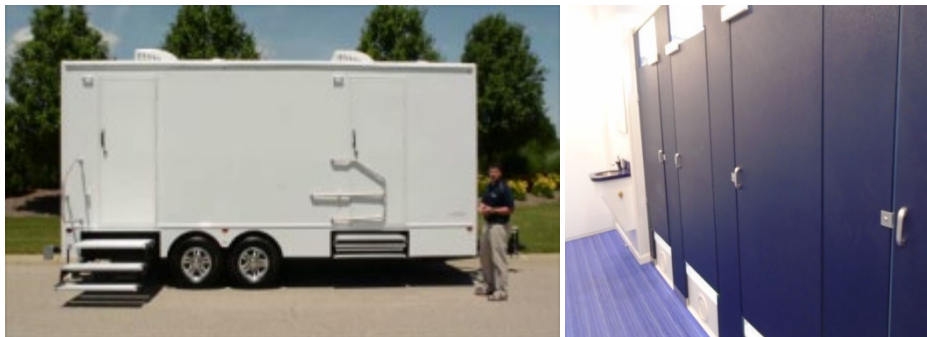
Thank you for purchasing a Satellite Suites™ Shower Trailer. Your trailer is designed to give you many years of service. Of course, the better you care for your trailer the longer your investment will last and the more satisfied your customers will be.

## OWNER'S INFORMATION

This owner's manual provides simple and easy to use instructions on how to operate your unit. For additional information, please refer to each individual section for operating procedures. We suggest an attendant be on site, for large events, who is familiar with the operations of the unit.

Following are some tips for caring for your unit. If you don't find what you need, please call us at. 574-350-2150 (8 am - 4 pm Monday through Friday).

A step by step guide on how to set up your trailer for an event and disassemble after your event is provided on pages six and seven of this manual.



# TRANSPORTING YOUR UNIT

We recommend reading "Transporting Your Trailer Checklist" on page six before transporting the trailer to any event. Our Satellite Suites 28 foot shower trailer has easy to use front connections for operation and maintenance. The heavy duty steel tongue mounted to 12' structural steel I-beam frame combined gives you a heavy duty chassis to put up with the daily abuse. The unit has two 7,000 pound torsion axles to create a smooth ride to and from events. The unit has a 20,000 pound coupler to ensure your trailer remains attached to your vehicle and adjustable in height to match you towing vehicle . A 12,000 pound tongue jack is included to support the weight of the trailer.



## Towing

When towing the shower trailer it is required that the waste and fresh water tank be pumped and drained to prevent structural damage or unsafe driving conditions. The stairs and hand rails need to be secured in place as well. When connecting the trailer to a tow vehicle, attach the safety chains and breakaway cable to the tow vehicle. Then, connect the 7-Pin electrical cord to the vehicle. Notice that the coupler has an open/close pin system. Put the pin in the "close" position to lock the trailer.

For safety, the break-away cable will activate the trailer's emergency brakes if it becomes disconnected from the tow vehicle. The breakaway switch and brakes can be tested at any time to verify the system is functioning properly.



The spare tire is mounted on the tongue at the front of the trailer. We recommend to properly secured your spare tire, tightened all lug nuts and check tire pressure to 80 psi before travelling to an event.

## Transporting Your Restroom Trailer

### Outside the Trailer:

1. Make sure hitch is in full locked position and pin is in place.
2. Check trailer brakes to make sure they are functional. (if installed)
3. Make sure breakaway tether is connected from brakes to the truck.
4. Check brake lights, running lights and turn signals to make sure they are operational.
5. Make sure safety chains are connected.
6. Make sure all steps are in and secure.
7. Make sure handrails are secure.
8. Make sure entry, service, and baggage doors are locked.
9. Make sure all leveling jacks are secure for travel and chains are wrapped around handles in back.
10. Check tire pressure, should be 80 psi on both trailer models.
11. Tighten all lug nuts.
12. Make sure trailer has temp tag, dealer plate or permanent license plate.

### Inside Trailer

1. Make sure doors are secure.
2. Trailer clean and free of debris.
3. Close vents.
4. Service area –breakers off, clean.

### Truck Inspection

1. Fuel.
2. Oil.
3. Brakes.
4. Lights
  - a. Head lamps
  - b. Running Lights
  - c. Turn Signals
5. No outstanding service items.
6. Log book.
7. DOT numbers on truck.
8. Dealer plate or temp tag.
9. Proof of Insurance.

# BEFORE EVENT SET UP CHECKLIST

1. Level Trailer.
2. Deploy Sidewinder Jacks.
3. Deploy Folding Steps and Handles.
4. Connect Power Cord to Power Source. (See Electrical)
5. Connect 3/4" Garden Hose to Trailer Water Connection. (See Plumbing)
6. At Service Area, Turn on Main Breaker. (See Electrical)
7. At Service Area, Turn on All AC breakers. (See Electrical)
8. At Service Area, Turn on Converter Breaker. (See Electrical)
9. At Service Area, Open Bottom City Water Valve. (See Plumbing)
10. At Service Area, Close Upper Water Tank Valve. (If Fresh Tank Only.) (Plumbing)
11. At Service Area, Turn on Master Pump Switch.(See Electrical)
12. At Service Area, Turn on Water Pump Switches. (See Electrical)

# AFTER THE EVENT - TEAR DOWN

After your event has ended the trailer is ready for tear down and transportation home.

1. Pull jacks up
2. Lock folding steps and handles.
3. Shut off all electrical outlets.
4. Place all cords in storage compartment.
5. Disconnect plumbing from trailer.
6. Lower jack until foot is in the air then pull quick release lever and continue until it retracts.
7. Secure all electrical and plumbing storage compartments and close all vents.
8. Attach coupler until it is in the LOCKED POSITION and insert lock pin.
9. Attach two safety chains.
10. Empty fresh water tank.
11. Empty waste tank before transporting.

# INITIAL SET UP

Initial set up begins with securing the unit, deploying folding stairs, plugging in electrical connections and hooking up water lines. See electrical and plumbing sections after initial set up and deploying folding stairs.

## Securing the Unit



On site, first unhook from tow vehicle. Position the trailer on as level a surface as possible with the cabin doors facing the event. After disconnecting the trailer from the truck, jack the front of the trailer up so that it is in a slightly uphill orientation with the front being higher than the back. Then go to the rear of the trailer, position the sidewinder jacks, and jack the trailer up so that it is level front to back and side to side. This can be done visually or with a level. Remember leveling the trailer side to side downhill will require you to reinforce the downhill tires with a 2 X 8 boards.

**Do not use the jack to lift trailer off the ground without securing it first.**

Front of Trailer

Back of Trailer



Side-Winder Jacks (Front)

Side-Winder Jacks (Rear)

The Satellite Suites™ 28 foot trailer has two 7,000 pound side-winder jacks located in the front and back of the unit. This is designed to keep the trailer stable and secure when in use.

## Sidewinder Leveling Jack Installation

The Satellite Suites™ 28 foot trailer has two side-winder jacks located in the front and back of the unit. We recommend the following step by step instructions before operating the trailer.



Sidewinder Leveling Jack



1. Remove Keeper Pin.



2. Insert Keeper Pin.



3. Remove Quick Adjust Pin.



4. Adjust Height and Insert Pin.



5. Once in contact with the ground rotate three to five times.

## Steps and Door Handles Installation.

The Satellite Suites 28 foot 8 station shower trailer has two fold down steps located at the side of the unit. The stairs are low maintenance, operator friendly and engineered to ensure safety. The following is a step by step guide on how to install and operate fold down steps and door handles before your unit is operational.

### Deploying Steps and Door Handles.



Deploying Steps.

1. Remove Spring Loaded Pin.



2. Pull Steps Out and Lock in Place.

3. Lift Support Bracket Up



4. Lift Bracket and Pull Steps towards Trailer until Pin is Inserted into Lock Hole.



5. Pull Down Right Front Stair Jack.



6. Pull Down Left Front Stair Jack.



7. Add Tension with Service Area Bar.



8. Add Tension with Service Area Bar.



9. Pull Down Bottom Step.



10. Apply pressure to secure stairs.



11. Remove Door Handle Pin.



12. Install Door Handle Pin.

# ELECTRICAL CONNECTIONS

To operate the system after trailer is leveled, stairs deployed, water connections are installed, all electrical connections must be accomplished before operating the trailer.



Cord Storage



Power Cords



Electrical Outlets

## Power Cords, Outlets and Utility Area.

Select power cord from storage compartment and plug into the electrical outlet. If the unit has power, it will show a blue light on the cord and at the cord connection at the trailer. If blue light is not present then check power connections to see if plugged in and the power supply is on. The power cord can be used with a twist lock connection to the generator or with an adapter to use in a standard house outlet.

**THE CORD IS 30 AMP TWIST-LOCK STYLE, BUT WILL NOT DRAW MORE THAN 20 AMPS.**



Check Blue Light on Cord



Check Blue Light on Trailer

## Power Cords.

### 28 Foot 8 Station Shower Trailer Power Cords

Cord 1 - Main (30), Converter(15), Men's Heat (15), Women's Heat (15), Air Conditioner(20)

Cord 2 - Main(30), Service Area(15), Water Heater One(15), Water Heater Two(15), Pumps (15)

Cord 3 - Main (30), Service Area Heat (15), Women's Heat Two (15), Women's AC (20)

Cord 4 - Main(30), Waste Tank Heater (15), Waste Tank Heater(15)

The Satellite Suites 28 foot shower trailer includes four easy to use power cords. Trailers come equipped with one 25' 10-gauge cord, with twist-lock connection and standard outlet adapter PER breaker box. The 28 Foot 8 Station Shower trailer can operate from two 20-Amp services (including ACs, lights, water pump, vents, entertainment package). A third cord is required for the optional water heater and the fourth cord for the optional forced air heat. All breakers are designed to draw no more than 20 Amps each. When running cords longer than 25', use 10 gauge extension cord. No more than 100'. A fourth cord is for the optional arctic waste tank heat.

## Electrical Inlets.

The Satellite Suites 28 foot 8 station shower trailer has two to four easy to use electrical outlets. We suggest running all electrical cords after connecting thru the easy to use drop down access port.



1. Electrical Inlets



2. Easy to Use Drop Down Access.

## Service Area



The Satellite Suites 28 foot trailer service area is located at the side of the unit, Our trailer has easy access to electrical, plumbing, and auxiliary controls. The following sections will assist you in troubleshooting your trailer if a problem occurs.

The service area has easy access to circuit breakers, fuses, 12 volt panel converter, battery disconnect auxiliary power and control switches. ( lights, vents, entertainment center, and water pump.)

## Breaker Boxes



The Satellite Suites 28 foot 8 station shower trailer has three to four breaker boxes located in the service area. We suggest checking all breakers you select are in the on position before operation.



Breaker One



Breaker Two



Breaker Three



Breaker Four

Breaker Box 1 Main (30), Converter(15), Men's Heat (15), Women's Heat (15), Air Conditioner(20)

Breaker Box 2 Main(30), Service Area(15), Water Heater One(15), Water Heater Two(15), Pumps (15)

Breaker Box 3 Main (30), Service Area Heat (15), Women's Heat Two (15), Women's AC (20)

Breaker Box 4 Main(30), Waste Tank Heater (15), Waste Tank Heater(15)

Note: Breaker Box 4 is used during fall and winter for heating the waste tank.

## 12 Volt Panel Converter

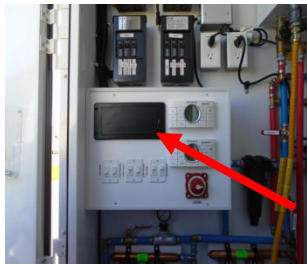


12 Volt Panel - Converter

Converter

The Satellite Suites 28 foot 8 station shower trailer includes a 12 Volt Converter located in the service area. This is the main control center for your Fuses, AM/FM Radio/Bluetooth Entertainment Center, Men's lights, Women's Lights, Exterior Lights, Service Area Light, Men's Vents and Women's Vents Switches and Battery Disconnect Auxiliary Power.

## Fuse Panel



12 Volt Fuse Panel

The fuse panel is located at the top of the 12 Volt Converter in the Service Area. Remove fuse panel with key or coin, open compartment, check and replace fuses.

### Fuses - All 15 amp

- |                   |                      |                 |
|-------------------|----------------------|-----------------|
| 1. Men's Lights   | 6. Women's Fans      | 11. Extra Fuses |
| 2. Women's Lights | 7. Men's AC          | 12. Extra Fuses |
| 3. Porch Lights   | 8. Women's AC        |                 |
| 4. Service Area   | 9. Water Tank Heater |                 |
| 5. Men's Fan      | 10. Extra Fuses      |                 |

## Optional Entertainment Center



Entertainment Center



Bluetooth & Code

The Satellite Suites 28 foot 8 station shower trailer includes AM/FM Radio and Bluetooth technology. Music can be played from your cell or the event planners phone by entering the 0000 code on your cell.

## Electrical Switches



12 Volt Switches in Unit



12 Volt Switches

The Satellite Suites 28 foot 8 station shower trailer includes eight panel switches to operate various lights, water pumps, and vent fans.

1. Men's lights, Women's Lights, Porch light ,Service Area Light, Men's Fan, Women's Fan.

## Battery Disconnect



Battery Disconnect in unit



Disconnect Panel

Battery Disconnect allows power to or from battery. Interior and Exterior lights at night can be operated by turning the battery disconnect to the on position. At night the delivery driver can turn on lights for easy set up.

If you lose power the battery disconnect can be turned on to provide lights, water and vents but air conditioning and heat will not be available.

Note: The system will not charge if the battery disconnect is not on.



## Group 24 - 12 Volt Deep Cycle Battery

A group 24- 12 volt deep cycle battery is included at the driver's side of the unit. The main purpose of the group 24- 12 volt battery is to provide emergency braking should the trailer become attached from your tow vehicle. The secondary feature of the battery is to provide auxiliary power to run the lights, vents, water and entertainment center up to an hour or more. A 50 amp resettable breaker is included to reset power. If you lose power, the battery can be charged on a normal battery charger or by a vehicle battery but no air conditioning or heat will be available.

# PLUMBING

## Water Connections.

To operate the system after trailer is leveled and stairs deployed, connect a 3/4" garden hose w 40-60 psi to the unit's water connection. Once the connections are made water will be pressure regulated at the service area. If no water is available the system can be operated by using the on-board fresh water tank. After this section please refer to the Electrical Section for final set up.



Water Connection Port.



3/4" Water Connection

Note: It is recommended to use 40-60 psi during operation. If the water pressure is above the recommended 40-60 psi your unit can overpower your fixtures inside the trailer. Golf Courses or municipal water systems normally have higher pressure. (100 psi.)

## Pressure Gauge



Pressure Gauge in Unit.



Pressure Gauge

When water connections are connected to the trailer the pressure regulator will reduce the water flow to 40psi. It is recommended to check the pressure gauge before operation. If the pressure gauge indicates more than 60 psi reduce the water pressure at the source.

## Water Filter



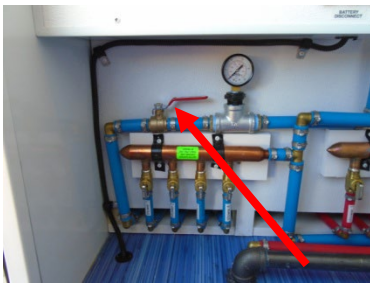
Water Filter in Unit.



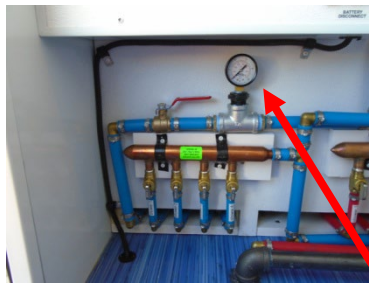
Water Filter

The unit is equipped with a water filter. Check and clean the water filter periodically every 30-60 days.

## MAIN WATER SUPPLY OPTIONS



Main shut off valve

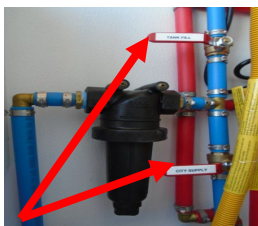


Water pressure gauge



Water Filter

You can operate your showers from a city water supply for onboard pump through the fresh water tank. The main water shut off valve will open the entire system. Under normal operations you will have the tank valve open and the city water valve closed. This action will fill the fresh water tank. At the top of the tank is an auto shut off valve to ensure your system does not overfill. After the tank is filled, turn on the pump supply valve. The main shut off valve must be in the on position this will run the trailer at full pressure.

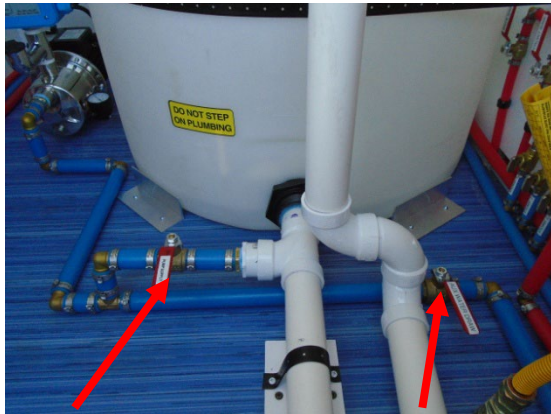


Tank Fill Valve Open and City Valve Closed

## City Water Supply

Operating from a fresh water hose connection, the trailer is designed to operate using standard city water. Once the 3/4" is connected, at the service area, open the bottom city water valve and close the upper water tank valve to operate. Do not use the water pump valve or switch since the fresh water connection will provide pressure to the system. In the city supply operation, shut the tank valve off and open the city water valve.

### At Service Area:



Open

Close

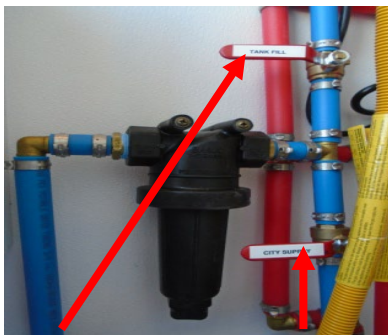


Open

Close

Open 1 1/2" shut off valve to drain tank.

The water tank must be emptied after the event is over. Open 1 1/2" shut off valve to drain tank. Do not transport the trailer with a filled water tank.

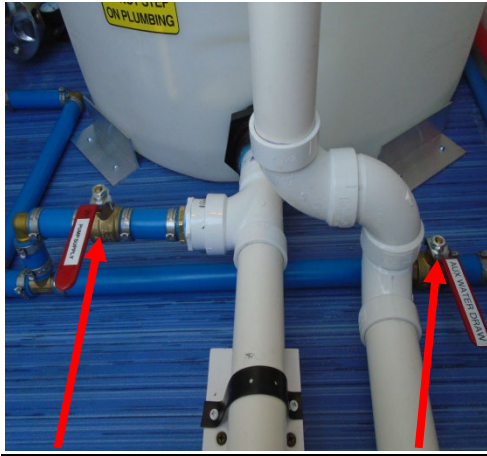


Tank Valve

City Valve

Tank Fill Valve Open and City Valve Closed

## Operating Using Off Board Fresh Water Tank System With Garden Hose.



Close

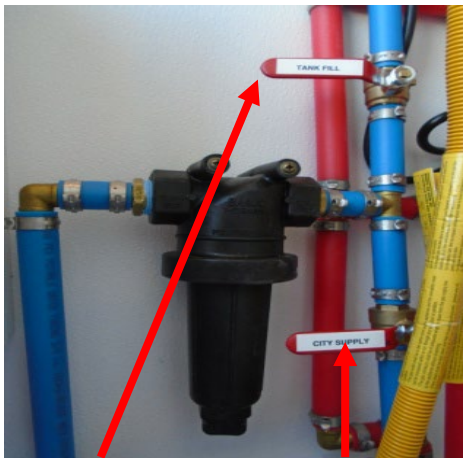
Open



Close

Open

Turn off Onboard tank valve and turn on the external valve



Tank Valve

City Valve

Close Water tank valve and close the city water valve.



Connect garden hose to valve

If the city water supply is too weak to operate the system, turn on the pump supply valve, turn on the on board tank valve and connect garden hose.

The water tank must be emptied after the event is over. Open 1 1/2" shut off valve to drain tank. Do not transport the trailer with a filled water tank

## Water Heater

The trailer has two on board water heaters. One water heater runs the front and the other the rear, Water needs to be flowing in the system in order to operate. Turn on the water heaters to operate. Plug in the water heaters to each receptacle. Turn on main and water heater breakers. At the back of the unit turn on all four propane tanks. Turn on water heater system in service area.



Front Water Heater



Back Water Heater



Propane Tanks



Plug in Front Water Heater



Plug in Back Water Heater



Turn Water Heater On

# HVAC - (Heating, Ventilating, and Air Conditioning)

## Turning on the Air Conditioning in the Unit.

Turn on air conditioning at the control panel to cold. The setting must be colder than the inside temperature to operate. The AC/Heating Unit has retractable air vents, easy to use controls and pop off vent screen for easy cleaning.



AC/Heat Unit



Open Air Vents



Turn On Controls



Clean Vent Screen

To operate the air conditioning unit, the main breaker, 20 amp AC breaker and 12 volt converter must be turned on. The main breaker must always be in the on position.



Men's AC Breaker



Women's AC Breaker



12 Volt Converter Panel Switches

## Turning on Heating the Unit.

Turn on Heater at the control panel to warm and open vents. If the outside temperature is between 45-50 degrees the standard use heat strip located in the AC unit will provide heat.

Note: An optional 4 Star Heat unit is also available.



AC/Heat Unit



Open Air Vents



Turn On Controls



Clean Vent Screen

To operate the heating unit the proper circuit breakers, thermostat and the 12 volt convertor must also be in the on position to operate.



Men's Heater



Women's Heater

The user has several options to turn on each corresponding breaker boxes in which they intend to use. The main breaker must be in the on position always.

# WASTE TANK

## Clean Out Port for Waste Tank.



Rear of Trailer.



Open Access Door



Accessible 4" Clean Out Port.

The Satellite Suites 28 foot trailer has an easy to use 4" clean out port for your waste tank. We use a smooth polypropylene tank so waste won't stick to it, and added a low point sump with bottom dump so you get all the waste out when the unit is pumped. We suggested using a power washer to clean out the tank occasionally.

## Blade Style Valve Dump Valve with a 2" Quick Connect Cam.



Blade Valve

The unit includes a banjo style valve dump valve with a 2" quick connect cam. The blade valve dumps from the bottom of the waste tank with a low point sump. Connect vacuum hose to 2" quick connect cam to dispose waste. Do not empty into a local sewer.

1. Read Waste Site Gauge at water port located at side of trailer.
2. Lower Tongue Jack to create gravity in the waste tank.
3. Connect vacuum hose to 2" quick connect cam at clean out port at rear of trailer. Waste tank is vented to prevent collapse during pumping.
4. Open valve.
5. Vacuum waste from tank.



Site Gauge. (Waste Tank)

The Waste Site Gauge is located near the service area at the water inlet. To prevent overfilling, the waste tank should be emptied when the gauge show no more than 75% full.

### AC/Heat Strip



Men's Heater



Women's Heater

The AC/Heat Strip can provide minimum heat. The system is regulated by the cabin thermostat. At the service area, turn on the heat at the control panel and the main, men's and women's circuit breakers.

## Forced Air Heat (Optional Accessory)



Forced Air Control



Service Area Heater

Trailer heat is available by the floor venting system regulated by the control dial under the vanity. The dial should be set to warm. At the service area, turn on heat at the AC/Heat control panel then switch on the main, men's and women's heat and converter to operate. The unit will heat the cabin only.

## Waste Tank Heater



Heat Pads



Insulated Tank

The Arctic Package provides protection from inclement weather. Frigid temperatures can cause freezing of your waste tank. The trailer is installed with 110v heater/heat pads for waste water heat. The 12 volt thermostat controls heat and will shut off at 45 degrees. The optional forced air heat will provide heat to the unit under 45 degrees. The waste tank heater is designed to work until 0 degrees with force air heat.

## Waste Tank Heater Circuit Breakers



Main/Waste Tank Heat/Service Room Heat (Breaker Four)

If your trailer is equipped with the optional Arctic Package, it will have four breaker boxes located in the Service Area. Turn on the Main/Waste Tank Heat/Service Room Heat Breakers to operate the heat. To operate the waste tank heater all breakers must be in the on position.

## WINTER OPERATION - ARCTIC PACKAGE



Heat Pads



Foam Insulation



Underbelly



Insulated Tank

If your trailer is equipped with the optional Arctic Package, when temperatures approach freezing, the Arctic Package will provide electric forced air heat to the cabin, service area, waste tank insulation and 110 volt waste tank heat pads. The Arctic Package is used during fall and winter for heating the waste tank and service area only.

To operate the Arctic Package:

1. Plug in all electrical cords (20 amp max.) into all receptacles (1,2,3,4).
2. Turn on all electrical breakers. (except Men's and Women's AC)
3. Turn on cabin heat below vanity and adjust thermostat in the service area.
4. Turn on circuit breaker switch for heat pads.

## Tips When Operating in Inclement Weather

We suggest the following tips when operating in inclement weather.

### Dump Valve

Ice and snow can prevent your dump valve from operating efficiently. Clear all ice and snow away from the valve before using.

### Water Supply

Ice and snow can freeze your water supply lines and prevent you from operating efficiently. Clear all ice and snow away from the 3/4" water valve before using. Check your water supply source to make sure it is clear and flowing before operating.

### Skirting the Trailer

Protecting your trailer from the inclement weather is essential to ensuring years of use. Skirting the trailer with a hay bale or vinyl RV skirting will reduce the chance of freezing when the temperature is below 0 or in cold wind.

### Monitoring your System

We recommend monitoring the water and heating system periodically. This will ensure your trailer will not require maintenance or replacement parts due to winter operation.

# REPAIRING FAUCETS AND ADJUSTING WATER FLOW

If water continues to run too long or short, the faucet cartridge can be adjusted for more or less water flow. **Always shut the water off before repairing the faucet. The water shut off valve located at the water port at the side of the trailer.**



1. Remove Cover Plate



2. Remove Fastener



3. Remove Cartridge



4. Adjust Cartridge by Loosening Hex Nut.

Be sure to reverse your steps and reinstall the cartridge.



Disassembled Aerator.



Cleaned Aerator Assembled



Aerator

The sink aerator will need periodic cleaning to increase your water flow. After maintenance is completed be sure to turn the water in your unit back on.

# TROUBLESHOOTING

## Problem

## Solution

I don't have water.

Check water connections.

Check water source.

Check water shut off valves.

I don't have power.

Check power cord for blue light.

Check power connections.

Trailer has to be grounded.

Jacks must be touching the ground.

Check main breaker is on.

Air Conditioning does not work.

Check power source.

Check AC breakers are on. (Men & Women)

Check power connections & main breaker.

Check thermostat is on.

Check converter breaker is on.

Vents do not work.

Check main breaker is on.

Check vent switch on converter is on.

Check power source.

Check 12 volt fuse.

Lights do not work

Check main breaker is on.

Check lights switch on converter is on.

Turn on Battery Disconnect (auxiliary power).

Check power source.

Check 15 amp fuse.

Faucets run too long or short

Adjust Sink Cartridge.

Urinals run too long or short.

Water not Flowing Clean Shower Main  
Valve or Replace

Toilets won't stop running.

Water not Flowing Clean Head or  
Replace

## CONTACTING CUSTOMER SERVICE

CALL THE MAIN BUSINESS OFFICE AT 574-350-2150 FROM 8 AM -5 PM EASTERN  
TIME ZONE. AFTER HOURS CALL 704-287-2065 or 574-596-1626

# WINTERIZING



As temperatures fall below freezing your Satellite Suites trailer will need to be winterized, unless it is in operation and equipped with the Arctic Package (see accessories). All water must be removed from the trailer or be treated with RV Antifreeze (propylene glycol). RV Antifreeze is environmentally safe and therefore the only antifreeze recommended for winterizing the trailer.

Failing to follow the winterization process instructions below will likely result in costly repairs to the trailer.

There are two methods to winterize your trailer. One method is to use compressed air and a minimal amount of RV Antifreeze. The other method is to pump RV Antifreeze throughout your entire water/plumbing system.

**Winterizing with Compressed Air** – To use this method you will need an air compressor and air hose with a  $\frac{3}{4}$  inch treaded hose fitting at the end to connect to the water intake valve on the trailer. If your air hose does not have a  $\frac{3}{4}$  inch threaded fitting on the end, remove one from the end of a garden hose and attach it with a hose clamp. An operator should run a small amount of RV antifreeze through his pump(s), since even running dry still leaves some water inside the plumbing and tanks.

To begin winterizing your trailer, drain the trailer's fresh water tank, water heater and water pump. There is a drain on both the fresh water tank and water heater. **NOTE: Some trailers do not have water heaters and therefore, do not need servicing.** Next, run the water pump until it is dry. The system is now ready to be cleared using compressed air. Start by connecting the air compressor to the water intake valve on the side of your trailer. Next, open the Fill Valve on the freshwater tank. Turn on the compressed air and clear the line. Close the Fill Valve when finished.

Next, open the City Fill Valve and turn on the compressed air. With the compressed air on, begin opening each of the toilet and water fixtures in the trailer, beginning with the one furthest away from the air supply and working back towards the air source.

Flush each toilet and urinal until there is only air escaping. Turn off the air compressor when toilets and urinals are clear.

Next, make sure the ball valve on the toilet is closed and add a few ounces of RV Antifreeze. For the urinals, pour in 16 ounces of RV Antifreeze in each urinal.

The trailer's water system is now clear and ready for storage.

**Winterizing using RV Antifreeze** – To winterize using this method you will need an on-board water pump or external 12 volt pump along with a clear antifreeze supply hose. For trailers with a water heater, use the water heater drain and empty the unit. Now, open the bypass valve. This prevents antifreeze from flowing into the water heater.

The next step is to use the clear hose and connect it to the intake of the water pump. Once complete, put the end of the clear hose into a gallon of RV Antifreeze. Turn on the pump to begin pumping antifreeze into the system.

Starting at the fixture furthest from the water pump, open the fixture and run until only pure antifreeze is visible. Do this for each toilet, sink and urinal.

Also, if you are using an on-board pump to distribute the antifreeze, be sure to open the City Fill Valve and External Shut-Off Valve at the City Water Connection. Run until pure antifreeze is visible.



## GENERAL RESTROOM TRAILER MAINTENANCE TIPS

### **Cleaning**

The entire trailer can be cleaned with general household cleaners. Tar and grease on the outside of the trailer should be cleaned off using mineral spirits. To clean the tank, use a high pressure sprayer.

### **Short Term Storage**

Properly maintaining the trailer between events will increase the life of the trailer and prevent unwanted odors. Before discussing the proper methods of storage, always remember to pump the waste and remove the fresh water from your restroom trailer before transporting. When the trailer returns from an event clean the inside as you would a bathroom at home, with standard household cleaners, towels and a broom or mop depending on floor condition. Wipe down all surfaces making sure the interior is clean and dry.

Other steps for proper storage include making sure all doors are locked and sealed to prevent rain, snow, or bugs from entering the trailer. With the Satellite Suites trailer the roof vents can remain open in mild weather to allow fresh air to circulate (Maxx Air covers keep the rain out). Make sure all breakers are turned off and that all steps and handrails have been returned to their locked travel position.

Following these basic steps will ensure a long, low-maintenance life for your restroom trailer.

# WARRANTY



## 3 -Year Limited Product Warranty

Satellite Industries, Inc. hereby warrants to the original purchaser that the Satellite Suites™ restroom trailer will be free of manufacturing defects in materials and workmanship for a period of three years from the date of shipment. If upon examination by Satellite Suites™, or our representative, any covered part or parts are determined to be defective Satellite will provide, free of charge, the repair or replacement of said items at Satellite's discretion. This warranty is subject to the following exclusions and limitations.

1. Customer Responsibility: The customer shall be responsible for normal maintenance and adjustments of the products. Notification must be made to Satellite Suites™ of the need for warranty repairs. Satellite will not be liable for transportation costs to and from repair facility, loss of revenue from down time or cost of rental equipment.
2. This warranty does not apply to components or accessories not manufactured by Satellite which carry a manufacturer's written warranty: air conditioners, heaters, faucets, toilets, water pumps, converter, vent fans, power converter
  - a. In order to expedite claims, Satellite Suites will handle credit from manufacturer. Contact Satellite Suites at 574-350-2150.
  - b. Warranted part(s) must be returned to Satellite Suites in order for part to be covered.
    - i. Satellite Suites™, Attention: Warranty, 1686 Commerce Drive, Bristol, IN 46507
3. This warranty applies only to products placed in normal use. It does not apply to any product that has been abused, neglected (i.e. lubrication, tire pressure, transported with full waste tank etc.), exposed to abrasive or corrosive chemicals, damaged in an accident or failures caused by lack of routine maintenance or winterization per Satellite Suites™ winterization procedure (<https://www.satelliterestroomtrailers.com/resources/winterizing>). Items that have been altered or repaired by anyone other than Satellite or a repair facility authorized by Satellite will also be excluded from warranty coverage.

## **CLAIMS EXCLUDED FROM THIS WARRANTY**

Satellite Suites™ is not responsible for claims relating to any of the following: (1) any type of defacing, including scratches, dents, chips, tears, or defacing on any surface not caused by the Manufacturer; (2) Floor wear; (3) damage due to unauthorized repairs, abuse, misuse, neglect, or overloading (as determined by the GVWR); (4) metal corrosion from fertilizers, cement, caustic chemicals etc., (5) damage caused by improper hitch ball or tow vehicle hook up; (6) damage caused by loose or improperly torqued lug nuts; (7) paint, decals, or graphics; (8) tow vehicle wiring; (9) tire alignment; (10) damage to any tow vehicle; (11) damage caused by acts of God or terrorism; (12) damage caused by theft of vandalism (12) damage caused by towing with water or waste in tank(s) and/or towing over the rated GVWR.

## **DISCLAIMER OF FURTHER WARRANTY**

**THE MANUFACTURER MAKES NO EXPRESS OR IMPLIED WARRANTIES OTHER THAN AS SPECIFICALLY SET FORTH IN THIS WARRANTY. NO EMPLOYEE OR AUTHORIZED REPRESENTATIVE HAS THE AUTHORITY TO CHANGE OR MODIFY THIS WARRANTY. IMPLIED WARRANTIES, INCLUDING THOSE OF MERCHANTABILITY, FITNESS FOR AN INTENDED PURPOSE ARE EXCLUDED TO THE EXTENT OF THE LAW AND WHEN NOT EXCLUDED ARE LIMITED TO A PERIOD OF ONE YEAR FROM SHIPMENT. IN NO EVENT SHALL SATELLITE INDUSTRIES, INC., BE LIABLE FOR INDIRECT, SPECIAL, CONSEQUENTIAL DAMAGES OR LIMITATIONS ON HOW LONG AN IMPLIED WARRANTY LASTS, SO THE ABOVE LIMITATIONS AND EXCLUSIONS MAY OR MAY NOT APPLY TO YOU. FOR WARRANTY SERVICE CONTACT SATELLITE SUITES™ AT 574-350-2150.**