

Set-up and teardown for cargo door ADA

Date Created: 03/04/25

Last Updated: 04/15/25

Document Status: Complete

Removing parts from the rear storage area

1. Remove round foot pedestals and install on the ramp door bracket
 - a. Image 2 green text/arrow
2. Remove all handrails
 - a. Images 1 & 2 yellow text/arrow
3. Remove aluminum ramps (REQUIRES 2 PEOPLE MINIMUMN)
 - a. Image 1 blue text/arrow
 - b. Note pin locations image 1 red text/arrow

Placing parts back into the storage area

1. Install aluminum ramps (REQUIRES 2 PEOPLE MINIMUMN)
 - a. Image 1 blue text/arrow
 - b. Note pin locations image 1 red text/arrow
 - c. Walking tread surface goes towards the service wall so you will be looking at the underside of the ramp.
2. Install handrails
 - a. Images 1 & 2 yellow text/arrow
3. Install round foot pedestals
 - a. Image 2 green text/arrow



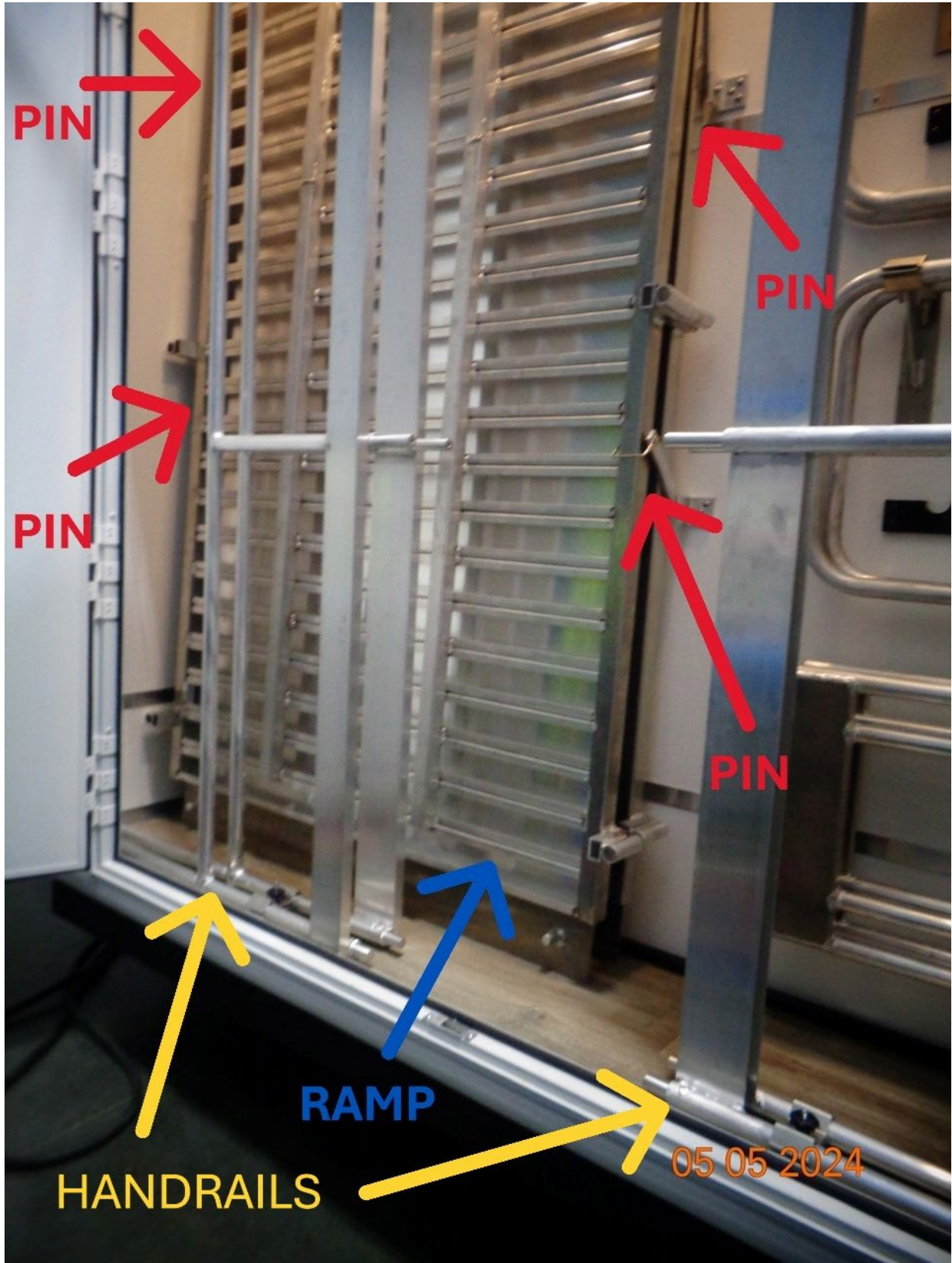
763.553.1900
800.883.1123



2530 Xenium Lane N.
Minneapolis, MN 55441-3695



satelliteindustries.com
information@satelliteindustries.com



763.553.1900
800.883.1123



2530 Xenium Lane N.
Minneapolis, MN 55441-3695



satelliteindustries.com
information@satelliteindustries.com



763.553.1900
800.883.1123



2530 Xenium Lane N.
Minneapolis, MN 55441-3695



satelliteindustries.com
information@satelliteindustries.com